

SUNNYSIDE COAL MINE – MONTHLY MONITORING SUMMARY

Site Information

EPL No: 12957

EPA Website Link: <http://epa.nsw.gov.au/prpoeoapp/ViewPOEOLicence.aspx?DOCID=40292&SYSUID=1&LICID=12957>

Licensee: Namoi Mining Pty Ltd

Licensee Address: Sunnyside Coal Project, 259 Coocooboona Lane, GUNNEDAH NSW 2380

EPL Monitoring Points: See Figure 1 below

Sampling Period: January 2021

Obtained Date: 04 February 2021

Publication Date: 20th February 2021

Table 1 - No Pollutant Limits Apply

EPL ID	Pollutant	Units of Measure	Monitoring Frequency	No. of Samples for the Month	Date(s) Sampled	Date(s) Obtained	Min Value	Mean Value	Median Value	Max or Only Value
1	Particulates-Deposited Matter	g/m ² /month	Continuous	1	18/01/21	04/02/21	-	-	-	1.20
2	Particulates-Deposited Matter	g/m ² /month	Continuous	1	18/01/21	04/02/21	-	-	-	2.50
4	Particulates-Deposited Matter	g/m ² /month	Continuous	1	18/01/21	04/02/21	-	-	-	2.10
5	Particulates-Deposited Matter	g/m ² /month	Continuous	1	18/01/21	04/02/21	-	-	-	1.00
6	Particulates-Deposited Matter	g/m ² /month	Continuous	1	18/01/21	04/02/21	-	-	-	2.30
7	PM ₁₀	µg/m ³	Every 6 days	5	Various	02/02/21	3.4	10.86	11	18.7
9	Conductivity	µS/cm	Special Frequency 1*	-	-	-	-	-	-	-
	Total organic carbon	mg/L					-	-	-	-
10	Conductivity	µS/cm	Special Frequency 1*	-	-	-	-	-	-	-
	Total organic carbon	mg/L					-	-	-	-
11	TSS	mg/L		-	-	-	-	-	-	-

SUNNYSIDE COAL MINE – MONTHLY MONITORING SUMMARY

EPL ID	Pollutant	Units of Measure	Monitoring Frequency	No. of Samples for the Month	Date(s) Sampled	Date(s) Obtained	Min Value	Mean Value	Median Value	Max or Only Value
	Conductivity	µS/cm	Special Frequency 2**	-			-	-	-	-
	Oil & Grease	mg/L		-			-	-		
	pH	pH		-			-	-		
	Total organic carbon	mg/L		-			-	-		
12	TSS	mg/L	Special Frequency 2**	-	-	-	-	-	-	-
	Conductivity	µS/cm		-			-	-		
	Oil & Grease	mg/L		-			-	-		
	pH	pH		-			-	-		
	Total organic carbon	mg/L		-			-	-		

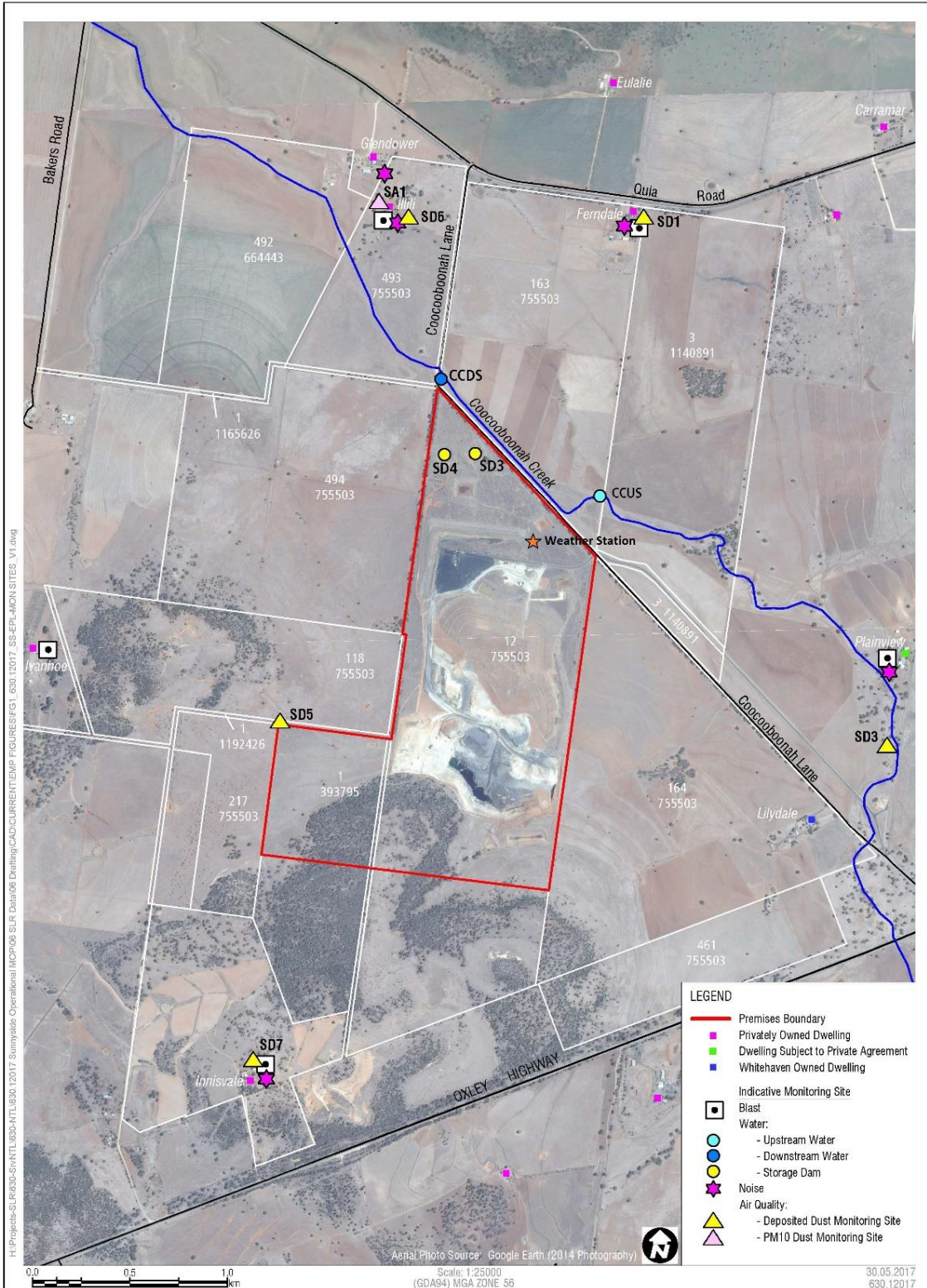
Table 2 - Pollutant Limits Apply

EPL ID	Pollutant	Units of Measure	Monitoring Frequency	No. of Samples for the Month	Date Sampled	Date Obtained	Min Value	Max Value	100%ile Limit	Exceedance (Yes/No)	Comments
9	TSS	mg/L	Special Frequency 1*	0	-	-	-	-	50	-	No discharge
	Oil & Grease	mg/L		0			-	-	10	-	No discharge
	pH	pH		0			-	-	6.5-8.5	-	No discharge
10	TSS	mg/L	Special Frequency 1*	0	-	-	-	-	50	-	No discharge
	Oil & Grease	mg/L		0			-	-	10	-	No discharge
	pH	pH		0			-	-	6.5-8.5	-	No discharge

* Special Frequency 1 means the collection of samples as soon as practicable after each discharge commences and in any case not more than 12 hours after each discharge commences.

** Special Frequency 2 means collection of samples quarterly (in the event of flow during the quarter) at a time when there is flow and as soon as practicable after each wet weather discharge from points 9 and 10 commences and in any case not more than 12 hours after each discharge commences.

Figure 1 – EPL 12957 Monitoring Locations



SUNNYSIDE COAL MINE – MONTHLY MONITORING SUMMARY

Site Information

EPL No: 12957

EPA Website Link: <http://epa.nsw.gov.au/prpoeoapp/ViewPOEOLicence.aspx?DOCID=40292&SYSUID=1&LICID=12957>

Licensee: Namoi Mining Pty Ltd

Licensee Address: Sunnyside Coal Project, 259 Coocooboona Lane, GUNNEDAH NSW 2380

EPL Monitoring Points: See Figure 1 below

Sampling Period: February 2021

Obtained Date: 11 March 2021

Publication Date: 20th March 2021

Table 1 - No Pollutant Limits Apply

EPL ID	Pollutant	Units of Measure	Monitoring Frequency	No. of Samples for the Month	Date(s) Sampled	Date(s) Obtained	Min Value	Mean Value	Median Value	Max or Only Value
1	Particulates-Deposited Matter	g/m ² /month	Continuous	1	17/02/21	05/03/21	-	-	-	1.06
2	Particulates-Deposited Matter	g/m ² /month	Continuous	1	17/02/21	05/03/21	-	-	-	1.14
4	Particulates-Deposited Matter	g/m ² /month	Continuous	1	17/02/21	05/03/21	-	-	-	1.83
5	Particulates-Deposited Matter	g/m ² /month	Continuous	1	17/02/21	05/03/21	-	-	-	1.13
6	Particulates-Deposited Matter	g/m ² /month	Continuous	1	17/02/21	05/03/21	-	-	-	1.97
7	PM ₁₀	µg/m ³	Every 6 days	5	Various	11/03/21	2.9	6.5	6.8	9.9
9	Conductivity	µS/cm	Special Frequency 1*	-	-	-	-	-	-	-
	Total organic carbon	mg/L					-	-	-	-
10	Conductivity	µS/cm	Special Frequency 1*	-	-	-	-	-	-	-
	Total organic carbon	mg/L					-	-	-	-
11	TSS	mg/L		-	-	-	-	-	-	-

SUNNYSIDE COAL MINE – MONTHLY MONITORING SUMMARY

EPL ID	Pollutant	Units of Measure	Monitoring Frequency	No. of Samples for the Month	Date(s) Sampled	Date(s) Obtained	Min Value	Mean Value	Median Value	Max or Only Value
	Conductivity	µS/cm	Special Frequency 2**	-			-	-	-	-
	Oil & Grease	mg/L		-			-	-		
	pH	pH		-			-	-		
	Total organic carbon	mg/L		-			-	-		
12	TSS	mg/L	Special Frequency 2**	-	-	-	-	-	-	-
	Conductivity	µS/cm		-			-	-		
	Oil & Grease	mg/L		-			-	-		
	pH	pH		-			-	-		
	Total organic carbon	mg/L		-			-	-		

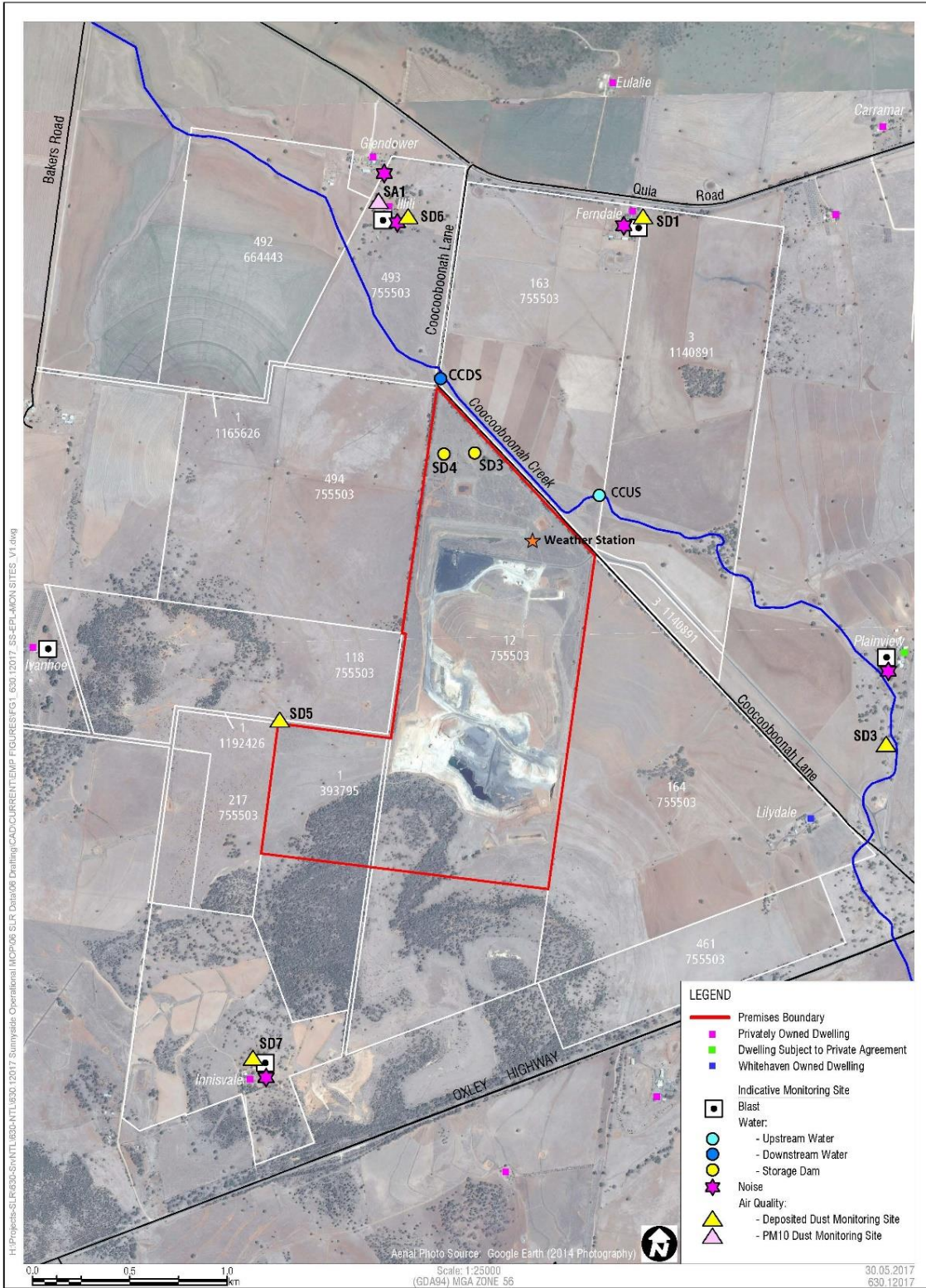
Table 2 - Pollutant Limits Apply

EPL ID	Pollutant	Units of Measure	Monitoring Frequency	No. of Samples for the Month	Date Sampled	Date Obtained	Min Value	Max Value	100%ile Limit	Exceedance (Yes/No)	Comments
9	TSS	mg/L	Special Frequency 1*	0	-	-	-	-	50	-	No discharge
	Oil & Grease	mg/L		0			-	-	10	-	No discharge
	pH	pH		0			-	-	6.5-8.5	-	No discharge
10	TSS	mg/L	Special Frequency 1*	0	-	-	-	-	50	-	No discharge
	Oil & Grease	mg/L		0			-	-	10	-	No discharge
	pH	pH		0			-	-	6.5-8.5	-	No discharge

* Special Frequency 1 means the collection of samples as soon as practicable after each discharge commences and in any case not more than 12 hours after each discharge commences.

** Special Frequency 2 means collection of samples quarterly (in the event of flow during the quarter) at a time when there is flow and as soon as practicable after each wet weather discharge from points 9 and 10 commences and in any case not more than 12 hours after each discharge commences.

Figure 1 – EPL 12957 Monitoring Locations



SUNNYSIDE COAL MINE – MONTHLY MONITORING SUMMARY

Site Information

EPL No: 12957

EPA Website Link: <http://epa.nsw.gov.au/prpoeoapp/ViewPOEOLicence.aspx?DOCID=40292&SYSUID=1&LICID=12957>

Licensee: Namoi Mining Pty Ltd

Licensee Address: Sunnyside Coal Project, 259 Coocooboona Lane, GUNNEDAH NSW 2380

EPL Monitoring Points: See Figure 1 below

Sampling Period: March 2021

Obtained Date: 19 April 2021

Publication Date: 19th April 2021

Table 1 - No Pollutant Limits Apply

EPL ID	Pollutant	Units of Measure	Monitoring Frequency	No. of Samples for the Month	Date(s) Sampled	Date(s) Obtained	Min Value	Mean Value	Median Value	Max or Only Value
1	Particulates-Deposited Matter (SD1)	g/m ² /month	Continuous	1	17/03/21	19/04/21	-	-	-	2.0
2	Particulates-Deposited Matter (SD3)	g/m ² /month	Continuous	1	17/03/21	19/04/21	-	-	-	1.5
4	Particulates-Deposited Matter (SD5)	g/m ² /month	Continuous	1	17/03/21	19/04/21	-	-	-	0.6
5	Particulates-Deposited Matter (SD6)	g/m ² /month	Continuous	1	17/03/21	19/04/21	-	-	-	1.13
6	Particulates-Deposited Matter (SD7)	g/m ² /month	Continuous	1	17/03/21	19/04/21	-	-	-	1.1
7	PM ₁₀	µg/m ³	Every 6 days	5	Various	29/03/21	1.3	8.1	9	14.4
9	Conductivity	µS/cm	Special Frequency 1*	-	-	-	-	-	-	-
	Total organic carbon	mg/L		-	-	-	-	-	-	-
10	Conductivity	µS/cm		-	-	-	-	-	-	-

SUNNYSIDE COAL MINE – MONTHLY MONITORING SUMMARY

EPL ID	Pollutant	Units of Measure	Monitoring Frequency	No. of Samples for the Month	Date(s) Sampled	Date(s) Obtained	Min Value	Mean Value	Median Value	Max or Only Value
	Total organic carbon	mg/L	Special Frequency 1*				-	-	-	-
11	TSS	mg/L	Special Frequency 2**	-	-	-	-	-	-	-
	Conductivity	µS/cm		-			-	-	-	
	Oil & Grease	mg/L		-			-	-	-	
	pH	pH		-			-	-	-	
	Total organic carbon	mg/L		-			-	-	-	
12	TSS	mg/L	Special Frequency 2**	-	-	-	-	-	-	-
	Conductivity	µS/cm		-			-	-	-	
	Oil & Grease	mg/L		-			-	-	-	
	pH	pH		-			-	-	-	
	Total organic carbon	mg/L		-			-	-	-	

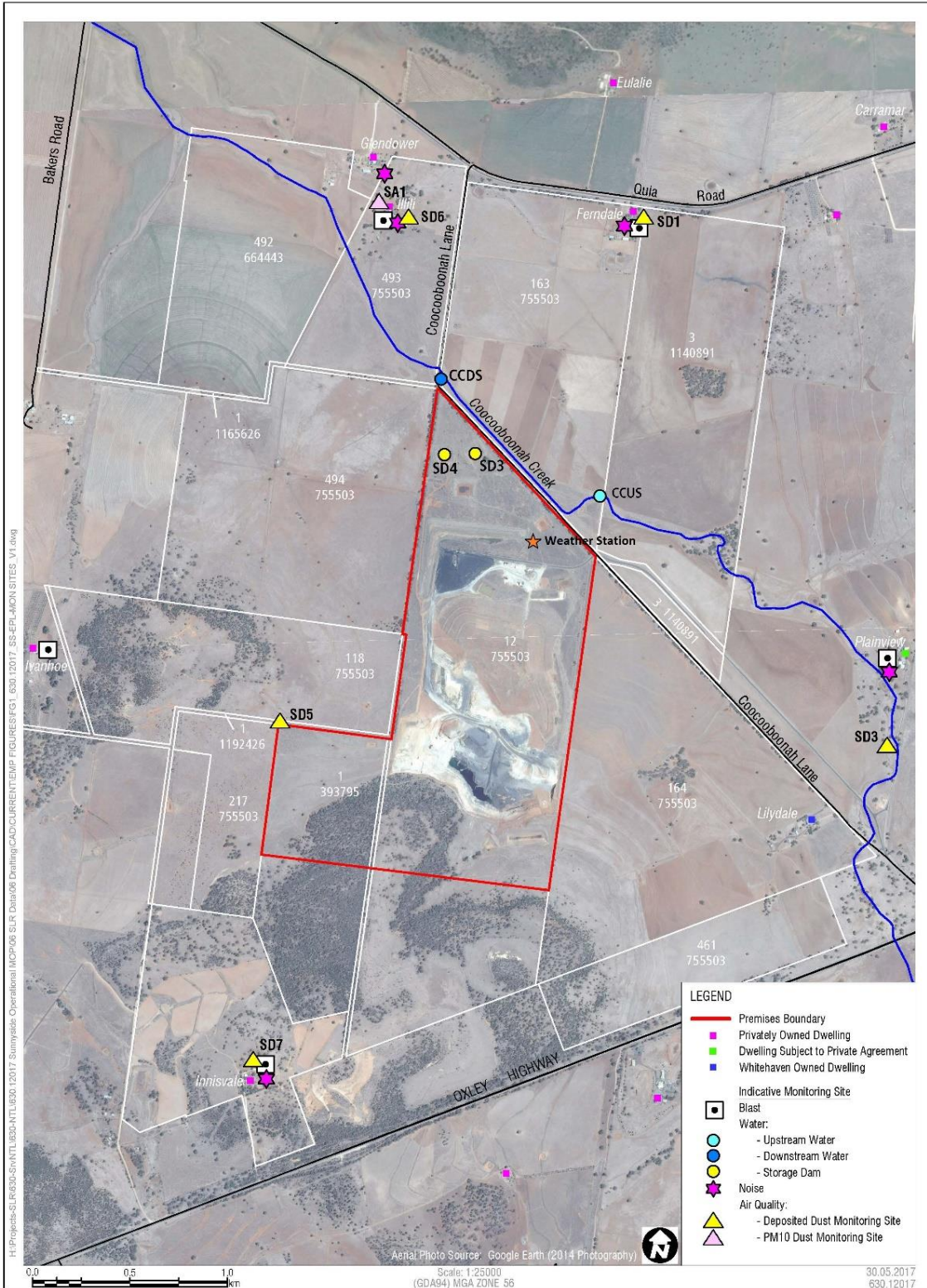
Table 2 - Pollutant Limits Apply

EPL ID	Pollutant	Units of Measure	Monitoring Frequency	No. of Samples for the Month	Date Sampled	Date Obtained	Min Value	Max Value	100%ile Limit	Exceedance (Yes/No)	Comments
9	TSS	mg/L	Special Frequency 1*	0	-	-	-	-	50	-	No discharge
	Oil & Grease	mg/L		0			-	-	10	-	No discharge
	pH	pH		0			-	-	6.5-8.5	-	No discharge
10	TSS	mg/L	Special Frequency 1*	0	-	-	-	-	50	-	No discharge
	Oil & Grease	mg/L		0			-	-	10	-	No discharge
	pH	pH		0			-	-	6.5-8.5	-	No discharge

* Special Frequency 1 means the collection of samples as soon as practicable after each discharge commences and in any case not more than 12 hours after each discharge commences.

** Special Frequency 2 means collection of samples quarterly (in the event of flow during the quarter) at a time when there is flow and as soon as practicable after each wet weather discharge from points 9 and 10 commences and in any case not more than 12 hours after each discharge commences.

Figure 1 – EPL 12957 Monitoring Locations





SUNNYSIDE COAL MINE – MONTHLY MONITORING SUMMARY

Site Information

EPL No: 12957

EPA Website Link: <http://epa.nsw.gov.au/prpoeoapp/ViewPOEOLicence.aspx?DOCID=40292&SYSUID=1&LICID=12957>

Licensee: Namoi Mining Pty Ltd

Licensee Address: Sunnyside Coal Project, 259 Coocooboona Lane, GUNNEDAH NSW 2380

EPL Monitoring Points: See Figure 1 below

Sampling Period: April 2021

Obtained Date: 10 May 2021

Publication Date: 19th May 2021

Table 1 - No Pollutant Limits Apply

EPL ID	Pollutant	Units of Measure	Monitoring Frequency	No. of Samples for the Month	Date(s) Sampled	Date(s) Obtained	Min Value	Mean Value	Median Value	Max or Only Value
1	Particulates-Deposited Matter (SD1)	g/m ² /month	Continuous	1	14/04/21	10/05/21	-	-	-	0.9
2	Particulates-Deposited Matter (SD3)	g/m ² /month	Continuous	1	14/04/21	10/05/21	-	-	-	1.32
4	Particulates-Deposited Matter (SD5)	g/m ² /month	Continuous	1	14/04/21	10/05/21	-	-	-	1.45
5	Particulates-Deposited Matter (SD6)	g/m ² /month	Continuous	1	14/04/21	10/05/21	-	-	-	1.07
6	Particulates-Deposited Matter (SD7)	g/m ² /month	Continuous	1	14/04/21	10/05/21	-	-	-	0.35
7	PM ₁₀	µg/m ³	Every 6 days	5	Various	10/05/21	8.8	12	9.9	17.2
9	Conductivity	µS/cm	Special Frequency 1*	-	-	-	-	-	-	-
	Total organic carbon	mg/L		-	-	-	-	-	-	-
10	Conductivity	µS/cm		-	-	-	-	-	-	-

SUNNYSIDE COAL MINE – MONTHLY MONITORING SUMMARY

EPL ID	Pollutant	Units of Measure	Monitoring Frequency	No. of Samples for the Month	Date(s) Sampled	Date(s) Obtained	Min Value	Mean Value	Median Value	Max or Only Value
	Total organic carbon	mg/L	Special Frequency 1*				-	-	-	-
11	TSS	mg/L	Special Frequency 2**	-	-	-	-	-	-	-
	Conductivity	µS/cm		-			-	-	-	
	Oil & Grease	mg/L		-			-	-	-	
	pH	pH		-			-	-	-	
	Total organic carbon	mg/L		-			-	-	-	
12	TSS	mg/L	Special Frequency 2**	-	-	-	-	-	-	-
	Conductivity	µS/cm		-			-	-	-	
	Oil & Grease	mg/L		-			-	-	-	
	pH	pH		-			-	-	-	
	Total organic carbon	mg/L		-			-	-	-	

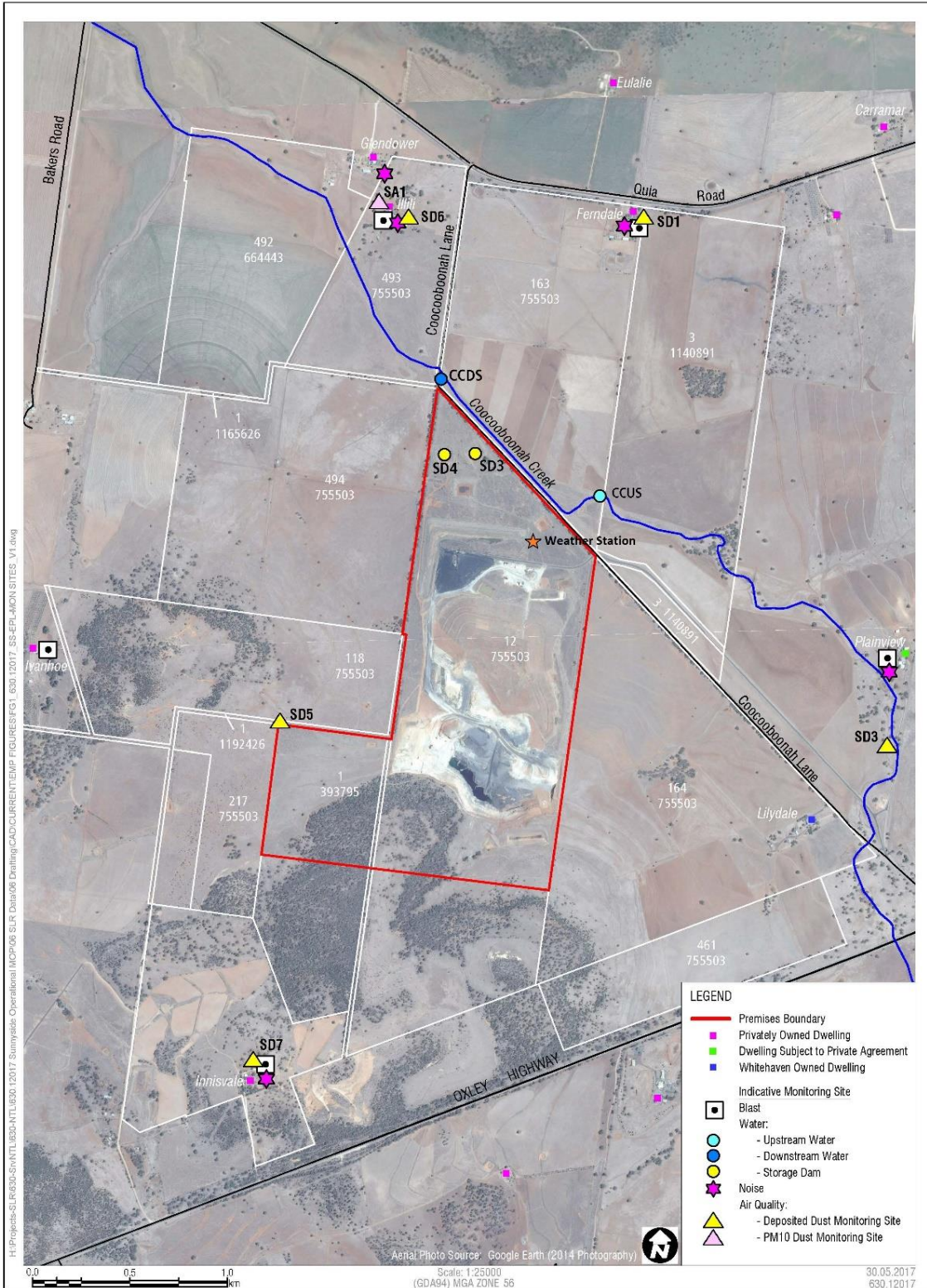
Table 2 - Pollutant Limits Apply

EPL ID	Pollutant	Units of Measure	Monitoring Frequency	No. of Samples for the Month	Date Sampled	Date Obtained	Min Value	Max Value	100%ile Limit	Exceedance (Yes/No)	Comments
9	TSS	mg/L	Special Frequency 1*	0	-	-	-	-	50	-	No discharge
	Oil & Grease	mg/L		0			-	-	10	-	No discharge
	pH	pH		0			-	-	6.5-8.5	-	No discharge
10	TSS	mg/L	Special Frequency 1*	0	-	-	-	-	50	-	No discharge
	Oil & Grease	mg/L		0			-	-	10	-	No discharge
	pH	pH		0			-	-	6.5-8.5	-	No discharge

* Special Frequency 1 means the collection of samples as soon as practicable after each discharge commences and in any case not more than 12 hours after each discharge commences.

** Special Frequency 2 means collection of samples quarterly (in the event of flow during the quarter) at a time when there is flow and as soon as practicable after each wet weather discharge from points 9 and 10 commences and in any case not more than 12 hours after each discharge commences.

Figure 1 – EPL 12957 Monitoring Locations



SUNNYSIDE COAL MINE – MONTHLY MONITORING SUMMARY

Site Information

EPL No: 12957

EPA Website Link: <http://epa.nsw.gov.au/prpoeoapp/ViewPOEOLicence.aspx?DOCID=40292&SYSUID=1&LICID=12957>

Licensee: Namoi Mining Pty Ltd

Licensee Address: Sunnyside Coal Project, 259 Coocooboona Lane, GUNNEDAH NSW 2380

EPL Monitoring Points: See Figure 1 below

Sampling Period: May 2021

Obtained Date: 11 June 2021

Publication Date: 18th June 2021

Table 1 - No Pollutant Limits Apply

EPL ID	Pollutant	Units of Measure	Monitoring Frequency	No. of Samples for the Month	Date(s) Sampled	Date(s) Obtained	Min Value	Mean Value	Median Value	Max or Only Value
1	Particulates-Deposited Matter (SD1)	g/m ² /month	Continuous	1	13/05/21	25/05/21	-	-	-	3.85
2	Particulates-Deposited Matter (SD3)	g/m ² /month	Continuous	1	13/05/21	25/05/21	-	-	-	0.88
4	Particulates-Deposited Matter (SD5)	g/m ² /month	Continuous	1	13/05/21	25/05/21	-	-	-	1.99
5	Particulates-Deposited Matter (SD6)	g/m ² /month	Continuous	1	13/05/21	25/05/21	-	-	-	2.85
6	Particulates-Deposited Matter (SD7)	g/m ² /month	Continuous	1	13/05/21	25/05/21	-	-	-	0.88
7	PM ₁₀	µg/m ³	Every 6 days	5	Various	11/06/21	0.8	3.4	3.7	6.3
9	Conductivity	µS/cm	Special Frequency 1*	-	-	-	-	-	-	-
	Total organic carbon	mg/L		-	-	-	-	-	-	-
10	Conductivity	µS/cm		-	-	-	-	-	-	-

SUNNYSIDE COAL MINE – MONTHLY MONITORING SUMMARY

EPL ID	Pollutant	Units of Measure	Monitoring Frequency	No. of Samples for the Month	Date(s) Sampled	Date(s) Obtained	Min Value	Mean Value	Median Value	Max or Only Value
	Total organic carbon	mg/L	Special Frequency 1*				-	-	-	-
11	TSS	mg/L	Special Frequency 2**	-	-	-	-	-	-	-
	Conductivity	µS/cm		-			-	-	-	
	Oil & Grease	mg/L		-			-	-	-	
	pH	pH		-			-	-	-	
	Total organic carbon	mg/L		-			-	-	-	
12	TSS	mg/L	Special Frequency 2**	-	-	-	-	-	-	-
	Conductivity	µS/cm		-			-	-	-	
	Oil & Grease	mg/L		-			-	-	-	
	pH	pH		-			-	-	-	
	Total organic carbon	mg/L		-			-	-	-	

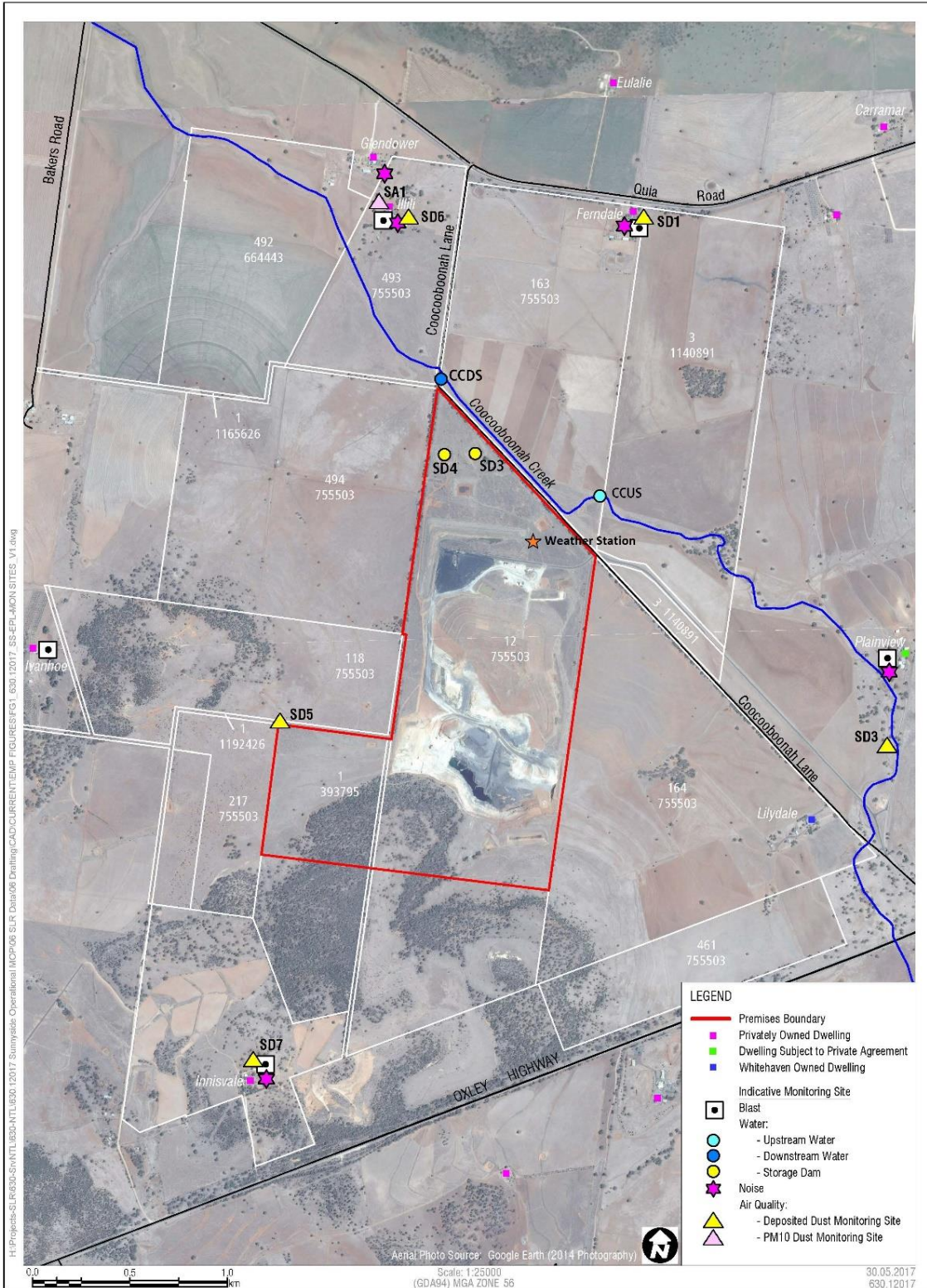
Table 2 - Pollutant Limits Apply

EPL ID	Pollutant	Units of Measure	Monitoring Frequency	No. of Samples for the Month	Date Sampled	Date Obtained	Min Value	Max Value	100%ile Limit	Exceedance (Yes/No)	Comments
9	TSS	mg/L	Special Frequency 1*	0	-	-	-	-	50	-	No discharge
	Oil & Grease	mg/L		0			-	-	10	-	No discharge
	pH	pH		0			-	-	6.5-8.5	-	No discharge
10	TSS	mg/L	Special Frequency 1*	0	-	-	-	-	50	-	No discharge
	Oil & Grease	mg/L		0			-	-	10	-	No discharge
	pH	pH		0			-	-	6.5-8.5	-	No discharge

* Special Frequency 1 means the collection of samples as soon as practicable after each discharge commences and in any case not more than 12 hours after each discharge commences.

** Special Frequency 2 means collection of samples quarterly (in the event of flow during the quarter) at a time when there is flow and as soon as practicable after each wet weather discharge from points 9 and 10 commences and in any case not more than 12 hours after each discharge commences.

Figure 1 – EPL 12957 Monitoring Locations



SUNNYSIDE COAL MINE – MONTHLY MONITORING SUMMARY

Site Information

EPL No: 12957

EPA Website Link: <http://epa.nsw.gov.au/prpoeoapp/ViewPOEOLicence.aspx?DOCID=40292&SYSUID=1&LICID=12957>

Licensee: Namoi Mining Pty Ltd

Licensee Address: Sunnyside Coal Project, 259 Coocooboona Lane, GUNNEDAH NSW 2380

EPL Monitoring Points: See Figure 1 below

Sampling Period: June 2021

Obtained Date: 08 July 2021

Publication Date: 19th July 2021

Table 1 - No Pollutant Limits Apply

EPL ID	Pollutant	Units of Measure	Monitoring Frequency	No. of Samples for the Month	Date(s) Sampled	Date(s) Obtained	Min Value	Mean Value	Median Value	Max or Only Value
1	Particulates-Deposited Matter (SD1)	g/m ² /month	Continuous	1	13/05/21	25/05/21	-	-	-	1.95
2	Particulates-Deposited Matter (SD3)	g/m ² /month	Continuous	1	13/05/21	25/05/21	-	-	-	0.08
4	Particulates-Deposited Matter (SD5)	g/m ² /month	Continuous	1	13/05/21	25/05/21	-	-	-	1.11
5	Particulates-Deposited Matter (SD6)	g/m ² /month	Continuous	1	13/05/21	25/05/21	-	-	-	0.89
6	Particulates-Deposited Matter (SD7)	g/m ² /month	Continuous	1	13/05/21	25/05/21	-	-	-	0.29
7	PM ₁₀	µg/m ³	Every 6 days	5	Various	11/06/21	0.1	5.68	2.6	21.7
9	Conductivity	µS/cm	Special Frequency 1*	-	-	-	-	-	-	-
	Total organic carbon	mg/L		-	-	-	-	-	-	-
10	Conductivity	µS/cm		-	-	-	-	-	-	-

SUNNYSIDE COAL MINE – MONTHLY MONITORING SUMMARY

EPL ID	Pollutant	Units of Measure	Monitoring Frequency	No. of Samples for the Month	Date(s) Sampled	Date(s) Obtained	Min Value	Mean Value	Median Value	Max or Only Value
	Total organic carbon	mg/L	Special Frequency 1*				-	-	-	-
11	TSS	mg/L	Special Frequency 2**	-			-	-	-	-
	Conductivity	µS/cm		-			-	-	-	
	Oil & Grease	mg/L		-			-	-	-	
	pH	pH		-			-	-	-	
	Total organic carbon	mg/L		-			-	-	-	
12	TSS	mg/L	Special Frequency 2**	-			-	-	-	-
	Conductivity	µS/cm		-			-	-	-	
	Oil & Grease	mg/L		-			-	-	-	
	pH	pH		-			-	-	-	
	Total organic carbon	mg/L		-			-	-	-	

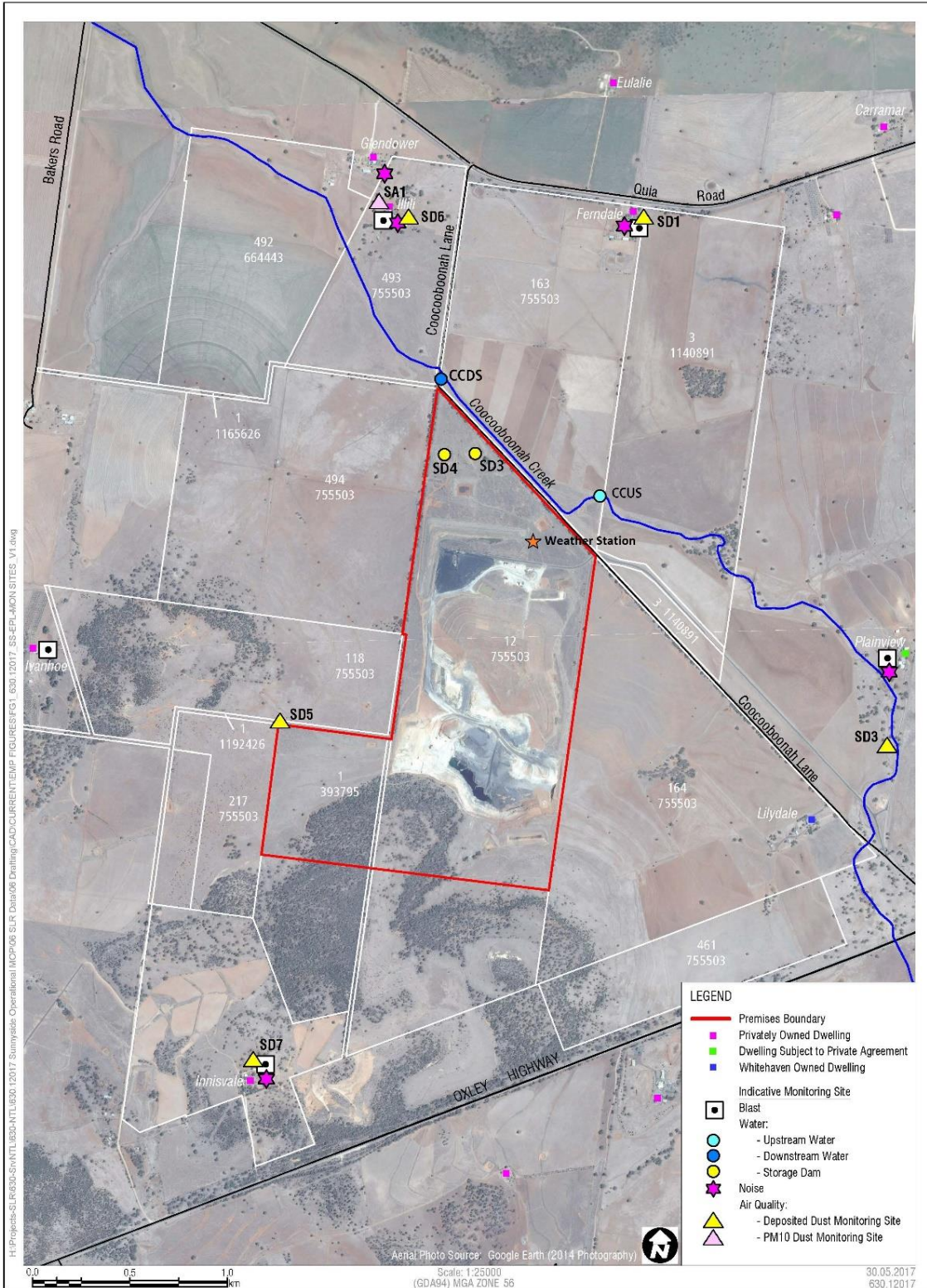
Table 2 - Pollutant Limits Apply

EPL ID	Pollutant	Units of Measure	Monitoring Frequency	No. of Samples for the Month	Date Sampled	Date Obtained	Min Value	Max Value	100%ile Limit	Exceedance (Yes/No)	Comments
9	TSS	mg/L	Special Frequency 1*	0	-	-	-	-	50	-	No discharge
	Oil & Grease	mg/L		0			-	-	10	-	No discharge
	pH	pH		0			-	-	6.5-8.5	-	No discharge
10	TSS	mg/L	Special Frequency 1*	0	-	-	-	-	50	-	No discharge
	Oil & Grease	mg/L		0			-	-	10	-	No discharge
	pH	pH		0			-	-	6.5-8.5	-	No discharge

* Special Frequency 1 means the collection of samples as soon as practicable after each discharge commences and in any case not more than 12 hours after each discharge commences.

** Special Frequency 2 means collection of samples quarterly (in the event of flow during the quarter) at a time when there is flow and as soon as practicable after each wet weather discharge from points 9 and 10 commences and in any case not more than 12 hours after each discharge commences.

Figure 1 – EPL 12957 Monitoring Locations



SUNNYSIDE COAL MINE – MONTHLY MONITORING SUMMARY

Site Information

EPL No: 12957

EPA Website Link: <http://epa.nsw.gov.au/prpoeoapp/ViewPOEOLicence.aspx?DOCID=40292&SYSUID=1&LICID=12957>

Licensee: Namoi Mining Pty Ltd

Licensee Address: Sunnyside Coal Project, 259 Coocooboona Lane, GUNNEDAH NSW 2380

EPL Monitoring Points: See Figure 1 below

Sampling Period: July 2021

Obtained Date: 05 August 2021

Publication Date: 19th August 2021

Table 1 - No Pollutant Limits Apply

EPL ID	Pollutant	Units of Measure	Monitoring Frequency	No. of Samples for the Month	Date(s) Sampled	Date(s) Obtained	Min Value	Mean Value	Median Value	Max or Only Value
1	Particulates-Deposited Matter (SD1)	g/m ² /month	Continuous	1	14/07/21	18/08/2021	-	-	-	0.5
2	Particulates-Deposited Matter (SD3)	g/m ² /month	Continuous	1	14/07/21	18/08/2021	-	-	-	1.18
4	Particulates-Deposited Matter (SD5)	g/m ² /month	Continuous	1	14/07/21	18/08/2021	-	-	-	0.2
5	Particulates-Deposited Matter (SD6)	g/m ² /month	Continuous	1	14/07/21	18/08/2021	-	-	-	1.14
6	Particulates-Deposited Matter (SD7)	g/m ² /month	Continuous	1	14/07/21	18/08/2021	-	-	-	0.8
7	PM ₁₀	µg/m ³	Every 6 days	5	Various	05/08/21	0.05	1.48	0.8	4.9
9	Conductivity	µS/cm	Special Frequency 1*	-	-	-	-	-	-	-
	Total organic carbon	mg/L		-	-	-	-	-	-	-
10	Conductivity	µS/cm		-	-	-	-	-	-	-

SUNNYSIDE COAL MINE – MONTHLY MONITORING SUMMARY

EPL ID	Pollutant	Units of Measure	Monitoring Frequency	No. of Samples for the Month	Date(s) Sampled	Date(s) Obtained	Min Value	Mean Value	Median Value	Max or Only Value
	Total organic carbon	mg/L	Special Frequency 1*				-	-	-	-
11	TSS	mg/L	Special Frequency 2**	-	-	-	-	-	-	-
	Conductivity	µS/cm		-			-	-	-	
	Oil & Grease	mg/L		-			-	-	-	
	pH	pH		-			-	-	-	
	Total organic carbon	mg/L		-			-	-	-	
12	TSS	mg/L	Special Frequency 2**	-	-	-	-	-	-	-
	Conductivity	µS/cm		-			-	-	-	
	Oil & Grease	mg/L		-			-	-	-	
	pH	pH		-			-	-	-	
	Total organic carbon	mg/L		-			-	-	-	

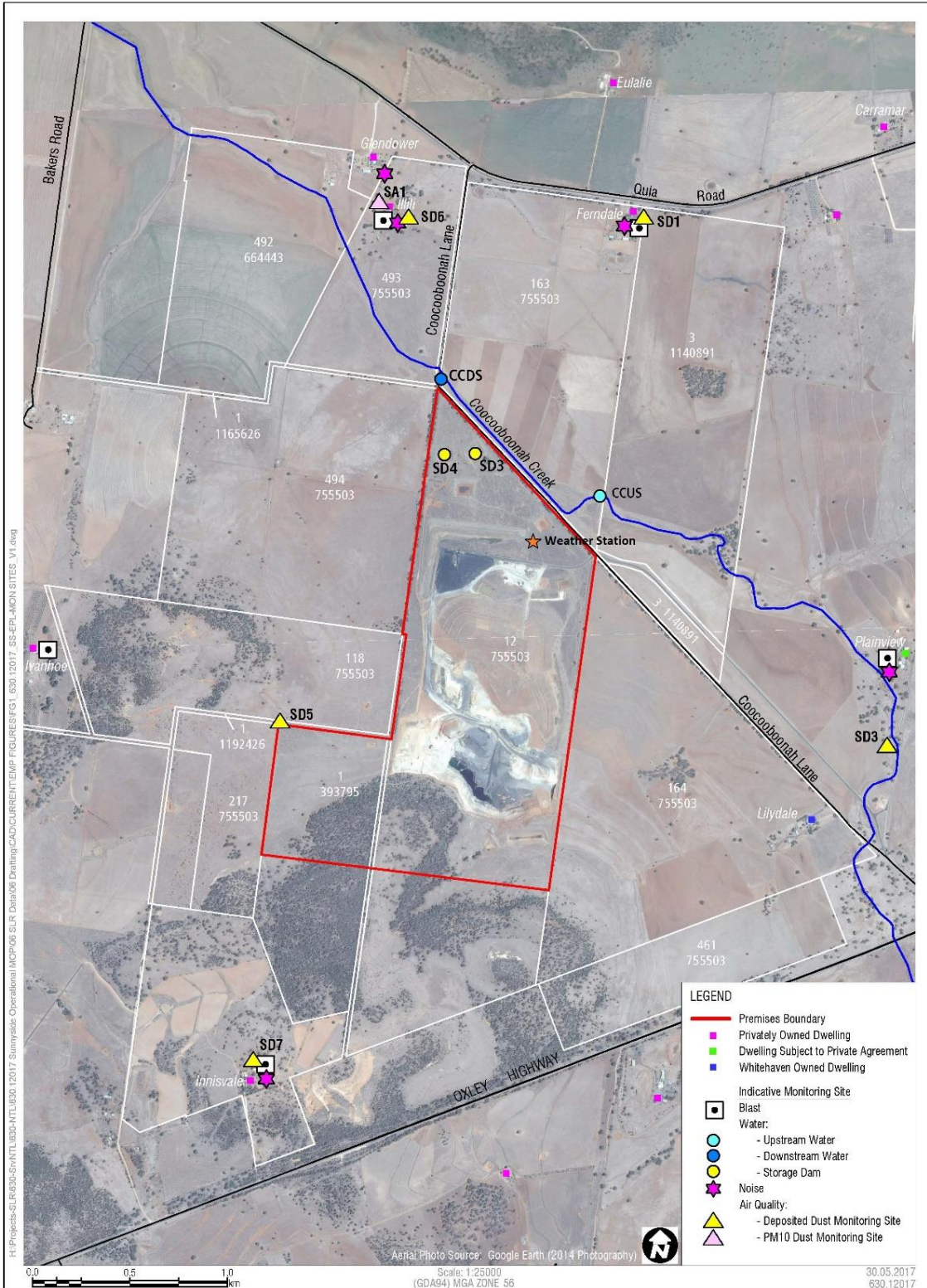
Table 2 - Pollutant Limits Apply

EPL ID	Pollutant	Units of Measure	Monitoring Frequency	No. of Samples for the Month	Date Sampled	Date Obtained	Min Value	Max Value	100%ile Limit	Exceedance (Yes/No)	Comments
9	TSS	mg/L	Special Frequency 1*	0	-	-	-	-	50	-	No discharge
	Oil & Grease	mg/L		0			-	-	10	-	No discharge
	pH	pH		0			-	-	6.5-8.5	-	No discharge
10	TSS	mg/L	Special Frequency 1*	0	-	-	-	-	50	-	No discharge
	Oil & Grease	mg/L		0			-	-	10	-	No discharge
	pH	pH		0			-	-	6.5-8.5	-	No discharge

* Special Frequency 1 means the collection of samples as soon as practicable after each discharge commences and in any case not more than 12 hours after each discharge commences.

** Special Frequency 2 means collection of samples quarterly (in the event of flow during the quarter) at a time when there is flow and as soon as practicable after each wet weather discharge from points 9 and 10 commences and in any case not more than 12 hours after each discharge commences.

Figure 1 – EPL 12957 Monitoring Locations



SUNNYSIDE COAL MINE – MONTHLY MONITORING SUMMARY

Site Information

EPL No: 12957

EPA Website Link: <http://epa.nsw.gov.au/prpoeoapp/ViewPOEOLicence.aspx?DOCID=40292&SYSUID=1&LICID=12957>

Licensee: Namoi Mining Pty Ltd

Licensee Address: Sunnyside Coal Project, 259 Coocooboona Lane, GUNNEDAH NSW 2380

EPL Monitoring Points: See Figure 1 below

Sampling Period: August 2021

Obtained Date: 07 September 2021

Publication Date: 20th September 2021

Table 1 - No Pollutant Limits Apply

EPL ID	Pollutant	Units of Measure	Monitoring Frequency	No. of Samples for the Month	Date(s) Sampled	Date(s) Obtained	Min Value	Mean Value	Median Value	Max or Only Value
1	Particulates-Deposited Matter (SD1)	g/m ² /month	Continuous	1	16/08/21	23/08/2021	-	-	-	0.48
2	Particulates-Deposited Matter (SD3)	g/m ² /month	Continuous	1	16/08/21	23/08/2021	-	-	-	1.24
4	Particulates-Deposited Matter (SD5)	g/m ² /month	Continuous	1	16/08/21	23/08/2021	-	-	-	0.2
5	Particulates-Deposited Matter (SD6)	g/m ² /month	Continuous	1	16/08/21	23/08/2021	-	-	-	0.06
6	Particulates-Deposited Matter (SD7)	g/m ² /month	Continuous	1	16/08/21	23/08/2021	-	-	-	0.11
7	PM ₁₀	µg/m ³	Every 6 days	6	Various	07/09/21	0.05	3.94	3.95	23.65
9	Conductivity	µS/cm	Special Frequency 1*	-	-	-	-	-	-	-
	Total organic carbon	mg/L		-	-	-	-	-	-	-
10	Conductivity	µS/cm		-	-	-	-	-	-	-

SUNNYSIDE COAL MINE – MONTHLY MONITORING SUMMARY

EPL ID	Pollutant	Units of Measure	Monitoring Frequency	No. of Samples for the Month	Date(s) Sampled	Date(s) Obtained	Min Value	Mean Value	Median Value	Max or Only Value
	Total organic carbon	mg/L	Special Frequency 1*				-	-	-	-
11	TSS	mg/L	Special Frequency 2**	-	-	-	-	-	-	-
	Conductivity	µS/cm		-			-	-	-	
	Oil & Grease	mg/L		-			-	-	-	
	pH	pH		-			-	-	-	
	Total organic carbon	mg/L		-			-	-	-	
12	TSS	mg/L	Special Frequency 2**	-	-	-	-	-	-	-
	Conductivity	µS/cm		-			-	-	-	
	Oil & Grease	mg/L		-			-	-	-	
	pH	pH		-			-	-	-	
	Total organic carbon	mg/L		-			-	-	-	

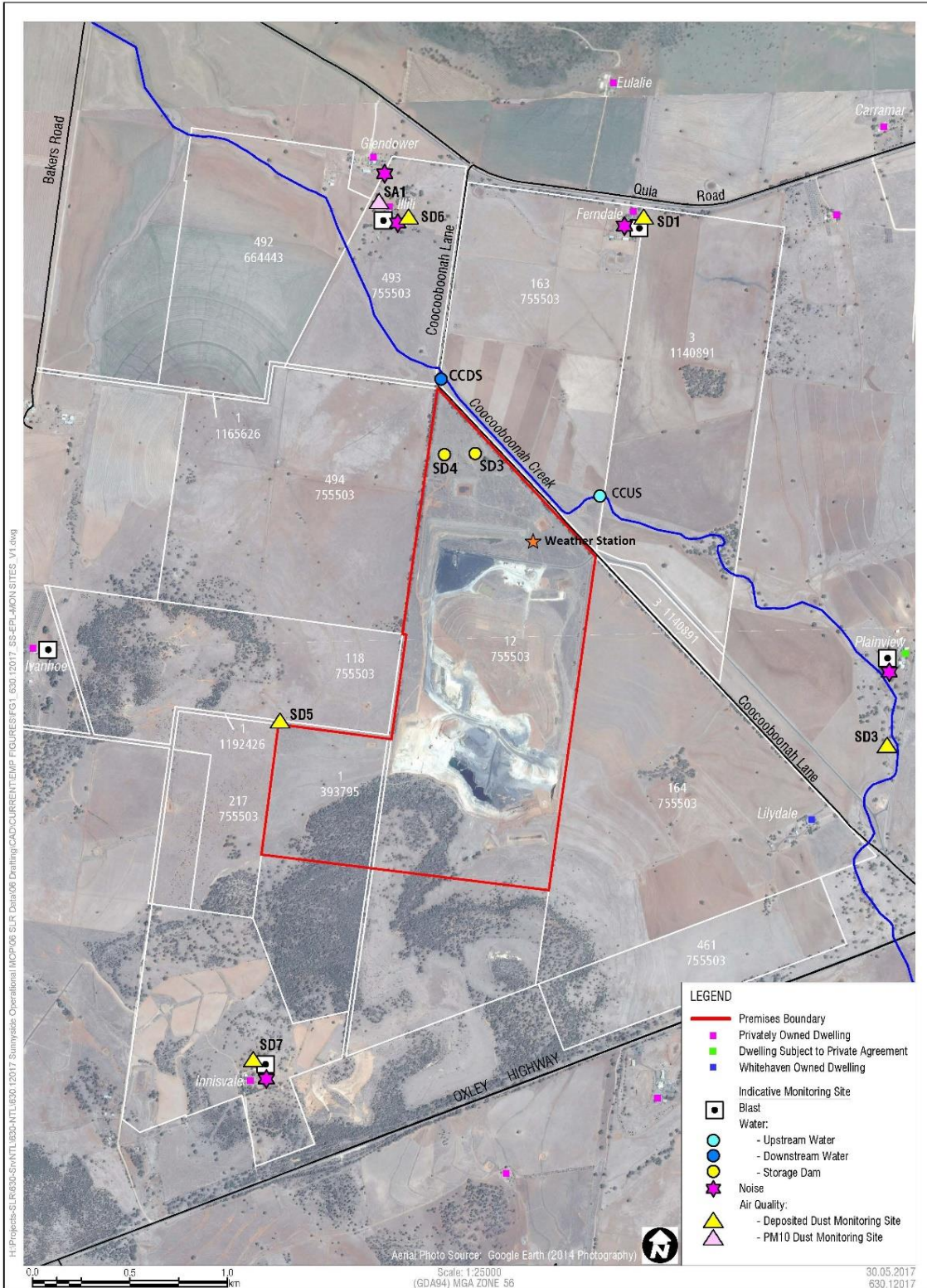
Table 2 - Pollutant Limits Apply

EPL ID	Pollutant	Units of Measure	Monitoring Frequency	No. of Samples for the Month	Date Sampled	Date Obtained	Min Value	Max Value	100%ile Limit	Exceedance (Yes/No)	Comments
9	TSS	mg/L	Special Frequency 1*	0	-	-	-	-	50	-	No discharge
	Oil & Grease	mg/L		0			-	-	10	-	No discharge
	pH	pH		0			-	-	6.5-8.5	-	No discharge
10	TSS	mg/L	Special Frequency 1*	0	-	-	-	-	50	-	No discharge
	Oil & Grease	mg/L		0			-	-	10	-	No discharge
	pH	pH		0			-	-	6.5-8.5	-	No discharge

* Special Frequency 1 means the collection of samples as soon as practicable after each discharge commences and in any case not more than 12 hours after each discharge commences.

** Special Frequency 2 means collection of samples quarterly (in the event of flow during the quarter) at a time when there is flow and as soon as practicable after each wet weather discharge from points 9 and 10 commences and in any case not more than 12 hours after each discharge commences.

Figure 1 – EPL 12957 Monitoring Locations



SUNNYSIDE COAL MINE – MONTHLY MONITORING SUMMARY

Site Information

EPL No: 12957

EPA Website Link: <http://epa.nsw.gov.au/prpoeoapp/ViewPOEOLicence.aspx?DOCID=40292&SYSUID=1&LICID=12957>

Licensee: Namoi Mining Pty Ltd

Licensee Address: Sunnyside Coal Project, 259 Coocooboona Lane, GUNNEDAH NSW 2380

EPL Monitoring Points: See Figure 1 below

Sampling Period: September 2021

Obtained Date: 11 October 2021

Publication Date: 19th October 2021

Table 1 - No Pollutant Limits Apply

EPL ID	Pollutant	Units of Measure	Monitoring Frequency	No. of Samples for the Month	Date(s) Sampled	Date(s) Obtained	Min Value	Mean Value	Median Value	Max or Only Value
1	Particulates-Deposited Matter (SD1)	g/m ² /month	Continuous	1	15/09/21	29/09/2021	-	-	-	0.67
2	Particulates-Deposited Matter (SD3)	g/m ² /month	Continuous	1	15/09/21	29/09/2021	-	-	-	0.46
4	Particulates-Deposited Matter (SD5)	g/m ² /month	Continuous	1	15/09/21	29/09/2021	-	-	-	0.36
5	Particulates-Deposited Matter (SD6)	g/m ² /month	Continuous	1	15/09/21	29/09/2021	-	-	-	0.71
6	Particulates-Deposited Matter (SD7)	g/m ² /month	Continuous	1	15/09/21	29/09/2021	-	-	-	0.83
7	PM ₁₀	µg/m ³	Every 6 days	5	Various	11/10/21	0.05	7.55	7.00	12.7
9	Conductivity	µS/cm	Special Frequency 1*	-	-	-	-	-	-	-
	Total organic carbon	mg/L		-	-	-	-	-	-	-
10	Conductivity	µS/cm		-	-	-	-	-	-	-

SUNNYSIDE COAL MINE – MONTHLY MONITORING SUMMARY

EPL ID	Pollutant	Units of Measure	Monitoring Frequency	No. of Samples for the Month	Date(s) Sampled	Date(s) Obtained	Min Value	Mean Value	Median Value	Max or Only Value
	Total organic carbon	mg/L	Special Frequency 1*				-	-	-	-
11	TSS	mg/L	Special Frequency 2**	-			-	-	-	-
	Conductivity	µS/cm		-			-	-	-	
	Oil & Grease	mg/L		-			-	-	-	
	pH	pH		-			-	-	-	
	Total organic carbon	mg/L		-			-	-	-	
12	TSS	mg/L	Special Frequency 2**	-			-	-	-	-
	Conductivity	µS/cm		-			-	-	-	
	Oil & Grease	mg/L		-			-	-	-	
	pH	pH		-			-	-	-	
	Total organic carbon	mg/L		-			-	-	-	

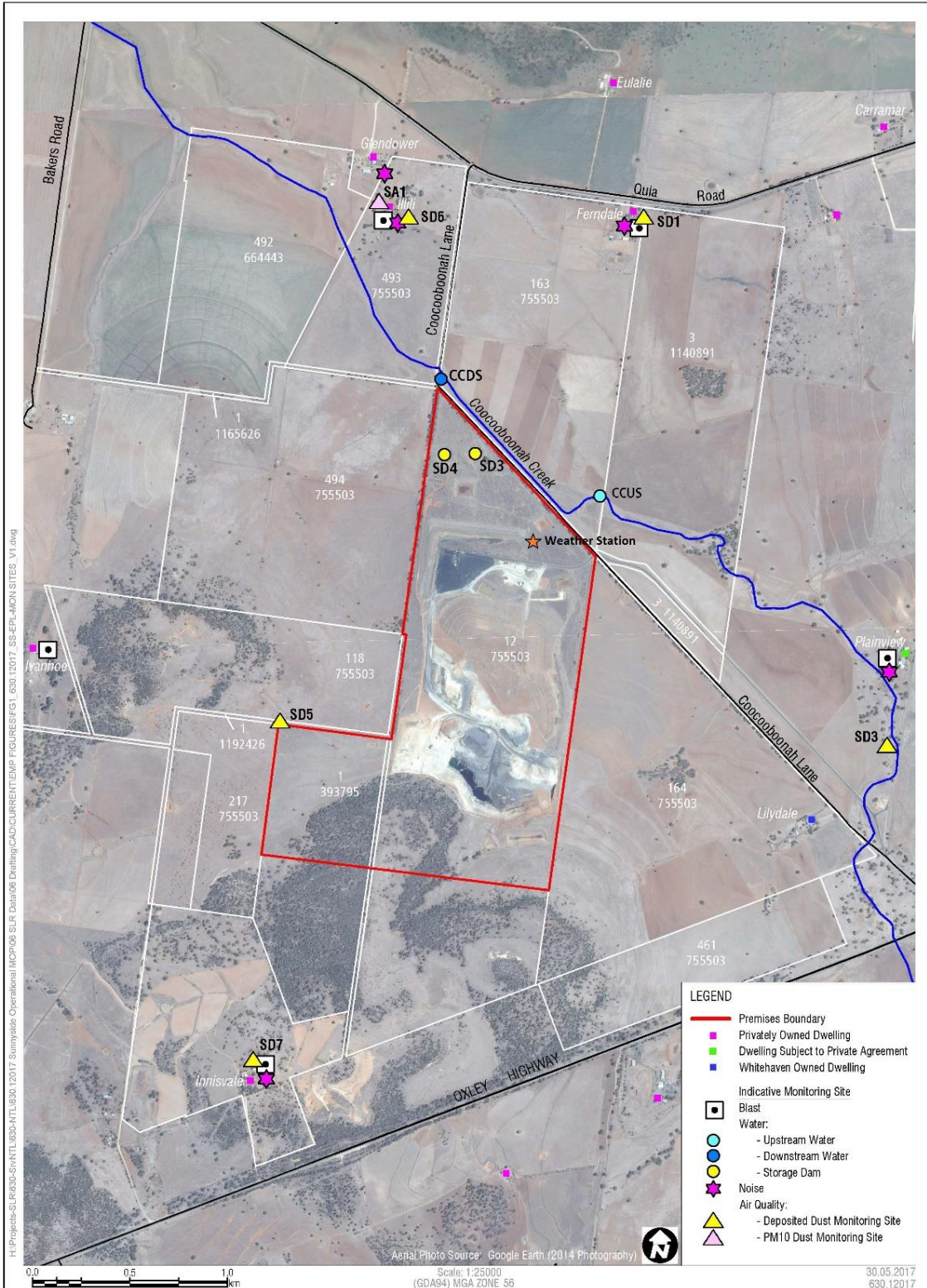
Table 2 - Pollutant Limits Apply

EPL ID	Pollutant	Units of Measure	Monitoring Frequency	No. of Samples for the Month	Date Sampled	Date Obtained	Min Value	Max Value	100%ile Limit	Exceedance (Yes/No)	Comments
9	TSS	mg/L	Special Frequency 1*	0	-	-	-	-	50	-	No discharge
	Oil & Grease	mg/L		0			-	-	10	-	No discharge
	pH	pH		0			-	-	6.5-8.5	-	No discharge
10	TSS	mg/L	Special Frequency 1*	0	-	-	-	-	50	-	No discharge
	Oil & Grease	mg/L		0			-	-	10	-	No discharge
	pH	pH		0			-	-	6.5-8.5	-	No discharge

* Special Frequency 1 means the collection of samples as soon as practicable after each discharge commences and in any case not more than 12 hours after each discharge commences.

** Special Frequency 2 means collection of samples quarterly (in the event of flow during the quarter) at a time when there is flow and as soon as practicable after each wet weather discharge from points 9 and 10 commences and in any case not more than 12 hours after each discharge commences.

Figure 1 – EPL 12957 Monitoring Locations



SUNNYSIDE COAL MINE – MONTHLY MONITORING SUMMARY

Site Information

EPL No: 12957

EPA Website Link: <http://epa.nsw.gov.au/prpoeoapp/ViewPOEOLicence.aspx?DOCID=40292&SYSUID=1&LICID=12957>

Licensee: Namoi Mining Pty Ltd

Licensee Address: Sunnyside Coal Project, 259 Coocooboona Lane, GUNNEDAH NSW 2380

EPL Monitoring Points: See Figure 1 below

Sampling Period: October 2021

Obtained Date: 15 November 2021

Publication Date: 19th November 2021

Table 1 - No Pollutant Limits Apply

EPL ID	Pollutant	Units of Measure	Monitoring Frequency	No. of Samples for the Month	Date(s) Sampled	Date(s) Obtained	Min Value	Mean Value	Median Value	Max or Only Value
1	Particulates-Deposited Matter (SD1)	g/m ² /month	Continuous	1	15/10/21	01/11/2021	-	-	-	0.94
2	Particulates-Deposited Matter (SD3)	g/m ² /month	Continuous	1	15/10/21	01/11/2021	-	-	-	0.28
4	Particulates-Deposited Matter (SD5)	g/m ² /month	Continuous	1	15/10/21	01/11/2021	-	-	-	0.42
5	Particulates-Deposited Matter (SD6)	g/m ² /month	Continuous	1	15/10/21	01/11/2021	-	-	-	0.31
6	Particulates-Deposited Matter (SD7)	g/m ² /month	Continuous	1	15/10/21	01/11/2021	-	-	-	1.04
7	PM ₁₀	µg/m ³	Every 6 days	5	Various	15/11/2021	1.1	7.46	9.4	10.8
9	Conductivity	µS/cm	Special Frequency 1*	-	-	-	-	-	-	-
	Total organic carbon	mg/L		-	-	-	-	-	-	-
10	Conductivity	µS/cm		-	-	-	-	-	-	-

SUNNYSIDE COAL MINE – MONTHLY MONITORING SUMMARY

EPL ID	Pollutant	Units of Measure	Monitoring Frequency	No. of Samples for the Month	Date(s) Sampled	Date(s) Obtained	Min Value	Mean Value	Median Value	Max or Only Value
	Total organic carbon	mg/L	Special Frequency 1*				-	-	-	-
11	TSS	mg/L	Special Frequency 2**	-	-	-	-	-	-	-
	Conductivity	µS/cm		-			-	-	-	
	Oil & Grease	mg/L		-			-	-	-	
	pH	pH		-			-	-	-	
	Total organic carbon	mg/L		-			-	-	-	
12	TSS	mg/L	Special Frequency 2**	-	-	-	-	-	-	-
	Conductivity	µS/cm		-			-	-	-	
	Oil & Grease	mg/L		-			-	-	-	
	pH	pH		-			-	-	-	
	Total organic carbon	mg/L		-			-	-	-	

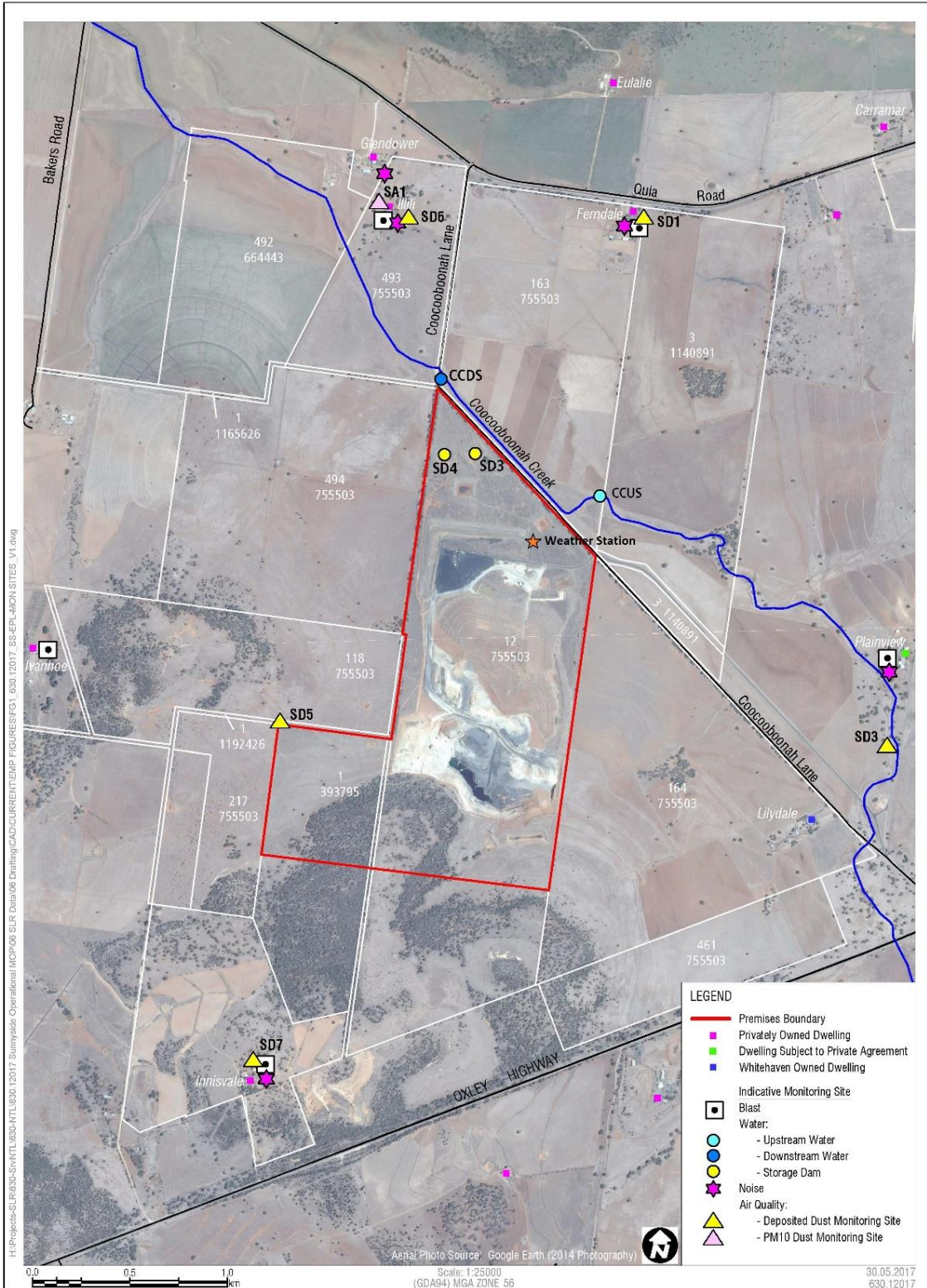
Table 2 - Pollutant Limits Apply

EPL ID	Pollutant	Units of Measure	Monitoring Frequency	No. of Samples for the Month	Date Sampled	Date Obtained	Min Value	Max Value	100%ile Limit	Exceedance (Yes/No)	Comments
9	TSS	mg/L	Special Frequency 1*	0	-	-	-	-	50	-	No discharge
	Oil & Grease	mg/L		0			-	-	10	-	No discharge
	pH	pH		0			-	-	6.5-8.5	-	No discharge
10	TSS	mg/L	Special Frequency 1*	0	-	-	-	-	50	-	No discharge
	Oil & Grease	mg/L		0			-	-	10	-	No discharge
	pH	pH		0			-	-	6.5-8.5	-	No discharge

* Special Frequency 1 means the collection of samples as soon as practicable after each discharge commences and in any case not more than 12 hours after each discharge commences.

** Special Frequency 2 means collection of samples quarterly (in the event of flow during the quarter) at a time when there is flow and as soon as practicable after each wet weather discharge from points 9 and 10 commences and in any case not more than 12 hours after each discharge commences.

Figure 1 – EPL 12957 Monitoring Locations



SUNNYSIDE COAL MINE – MONTHLY MONITORING SUMMARY

Site Information

EPL No: 12957

EPA Website Link: <http://epa.nsw.gov.au/prpoeoapp/ViewPOEOLicence.aspx?DOCID=40292&SYSUID=1&LICID=12957>

Licensee: Namoi Mining Pty Ltd

Licensee Address: Sunnyside Coal Project, 259 Coocooboona Lane, GUNNEDAH NSW 2380

EPL Monitoring Points: See Figure 1 below

Sampling Period: November 2021

Obtained Date: 14 December 2021

Publication Date: 17th December 2021

Table 1 - No Pollutant Limits Apply

EPL ID	Pollutant	Units of Measure	Monitoring Frequency	No. of Samples for the Month	Date(s) Sampled	Date(s) Obtained	Min Value	Mean Value	Median Value	Max or Only Value
1	Particulates-Deposited Matter (SD1)	g/m ² /month	Continuous	1	15/11/21	23/11/2021	-	-	-	0.89
2	Particulates-Deposited Matter (SD3)	g/m ² /month	Continuous	1	15/11/21	23/11/2021	-	-	-	0.71
4	Particulates-Deposited Matter (SD5)	g/m ² /month	Continuous	1	15/11/21	23/11/2021	-	-	-	1.02
5	Particulates-Deposited Matter (SD6)	g/m ² /month	Continuous	1	15/11/21	23/11/2021	-	-	-	0.40
6	Particulates-Deposited Matter (SD7)	g/m ² /month	Continuous	1	15/11/21	23/11/2021	-	-	-	0.72
7	PM ₁₀	µg/m ³	Every 6 days	5	Various	14/12/2021	2.2	9.6	7.1	25.5
9	Conductivity	µS/cm	Special Frequency 1*	-	-	-	-	-	-	-
	Total organic carbon	mg/L		-	-	-	-	-	-	-
10	Conductivity	µS/cm		-	-	-	-	-	-	-

SUNNYSIDE COAL MINE – MONTHLY MONITORING SUMMARY

EPL ID	Pollutant	Units of Measure	Monitoring Frequency	No. of Samples for the Month	Date(s) Sampled	Date(s) Obtained	Min Value	Mean Value	Median Value	Max or Only Value
	Total organic carbon	mg/L	Special Frequency 1*				-	-	-	-
11	TSS	mg/L	Special Frequency 2**	1	22 Nov 2021	29 Nov 2021	-	-	-	38
	Conductivity	µS/cm		1			-	-	-	215
	Oil & Grease	mg/L		1			-	-	-	<5
	pH	pH		1			-	-	-	7.4
	Total organic carbon	mg/L		1			-	-	-	21
12	TSS	mg/L	Special Frequency 2**	1	22 Nov 2021	29 Nov 2021	-	-	-	312
	Conductivity	µS/cm		1			-	-	-	180
	Oil & Grease	mg/L		1			-	-	-	<5
	pH	pH		1			-	-	-	7.6
	Total organic carbon	mg/L		1			-	-	-	13

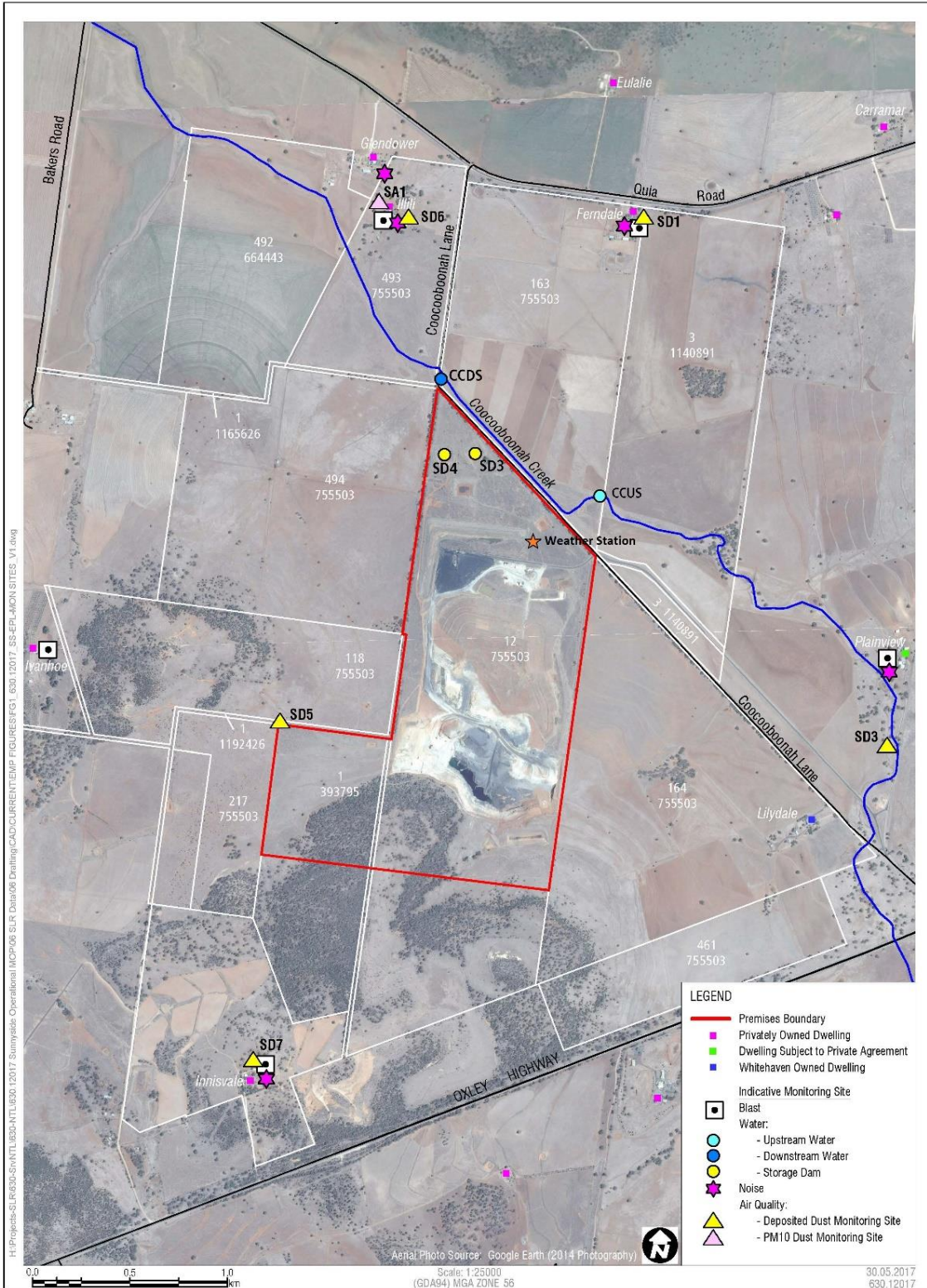
Table 2 - Pollutant Limits Apply

EPL ID	Pollutant	Units of Measure	Monitoring Frequency	No. of Samples for the Month	Date Sampled	Date Obtained	Min Value	Max Value	100%ile Limit	Exceedance (Yes/No)	Comments
9	TSS	mg/L	Special Frequency 1*	0	-	-	-	-	50	-	No discharge
	Oil & Grease	mg/L		0			-	-	10	-	No discharge
	pH	pH		0			-	-	6.5-8.5	-	No discharge
10	TSS	mg/L	Special Frequency 1*	0	-	-	-	-	50	-	No discharge
	Oil & Grease	mg/L		0			-	-	10	-	No discharge
	pH	pH		0			-	-	6.5-8.5	-	No discharge

* Special Frequency 1 means the collection of samples as soon as practicable after each discharge commences and in any case not more than 12 hours after each discharge commences.

** Special Frequency 2 means collection of samples quarterly (in the event of flow during the quarter) at a time when there is flow and as soon as practicable after each wet weather discharge from points 9 and 10 commences and in any case not more than 12 hours after each discharge commences.

Figure 1 – EPL 12957 Monitoring Locations





SUNNYSIDE COAL MINE – MONTHLY MONITORING SUMMARY

Site Information

EPL No: 12957

EPA Website Link: <http://epa.nsw.gov.au/prpoeoapp/ViewPOEOLicence.aspx?DOCID=40292&SYSUID=1&LICID=12957>

Licensee: Namoi Mining Pty Ltd

Licensee Address: Sunnyside Coal Project, 259 Coocooboona Lane, GUNNEDAH NSW 2380

EPL Monitoring Points: See Figure 1 below

Sampling Period: December 2021

Obtained Date: 18th January 2022

Publication Date: 18th January 2022

Table 1 - No Pollutant Limits Apply

EPL ID	Pollutant	Units of Measure	Monitoring Frequency	No. of Samples for the Month	Date(s) Sampled	Date(s) Obtained	Min Value	Mean Value	Median Value	Max or Only Value
1	Particulates-Deposited Matter (SD1)	g/m ² /month	Continuous	1	16/12/2021	4/01/2022	-	-	-	0.89
2	Particulates-Deposited Matter (SD3)	g/m ² /month	Continuous	1	16/12/2021	4/01/2022	-	-	-	0.69
4	Particulates-Deposited Matter (SD5)	g/m ² /month	Continuous	1	16/12/2021	4/01/2022	-	-	-	1.81
5	Particulates-Deposited Matter (SD6)	g/m ² /month	Continuous	1	16/12/2021	4/01/2022	-	-	-	1.27
6	Particulates-Deposited Matter (SD7)	g/m ² /month	Continuous	1	16/12/2021	4/01/2022	-	-	-	0.94
7	PM ₁₀	µg/m ³	Every 6 days	5	Various	18/01/2022	0.05	5.57	3.6	12
9	Conductivity	µS/cm	Special Frequency 1*	-	-	-	-	-	-	-
	Total organic carbon	mg/L		-	-	-	-	-	-	-
10	Conductivity	µS/cm		-	-	-	-	-	-	-

SUNNYSIDE COAL MINE – MONTHLY MONITORING SUMMARY

EPL ID	Pollutant	Units of Measure	Monitoring Frequency	No. of Samples for the Month	Date(s) Sampled	Date(s) Obtained	Min Value	Mean Value	Median Value	Max or Only Value
	Total organic carbon	mg/L	Special Frequency 1*				-	-	-	-
11	TSS	mg/L	Special Frequency 2**	-	-	-	-	-	-	-
	Conductivity	µS/cm		-			-	-	-	
	Oil & Grease	mg/L		-			-	-	-	
	pH	pH		-			-	-	-	
	Total organic carbon	mg/L		-			-	-	-	
12	TSS	mg/L	Special Frequency 2**	-	-	-	-	-	-	-
	Conductivity	µS/cm		-			-	-	-	
	Oil & Grease	mg/L		-			-	-	-	
	pH	pH		-			-	-	-	
	Total organic carbon	mg/L		-			-	-	-	

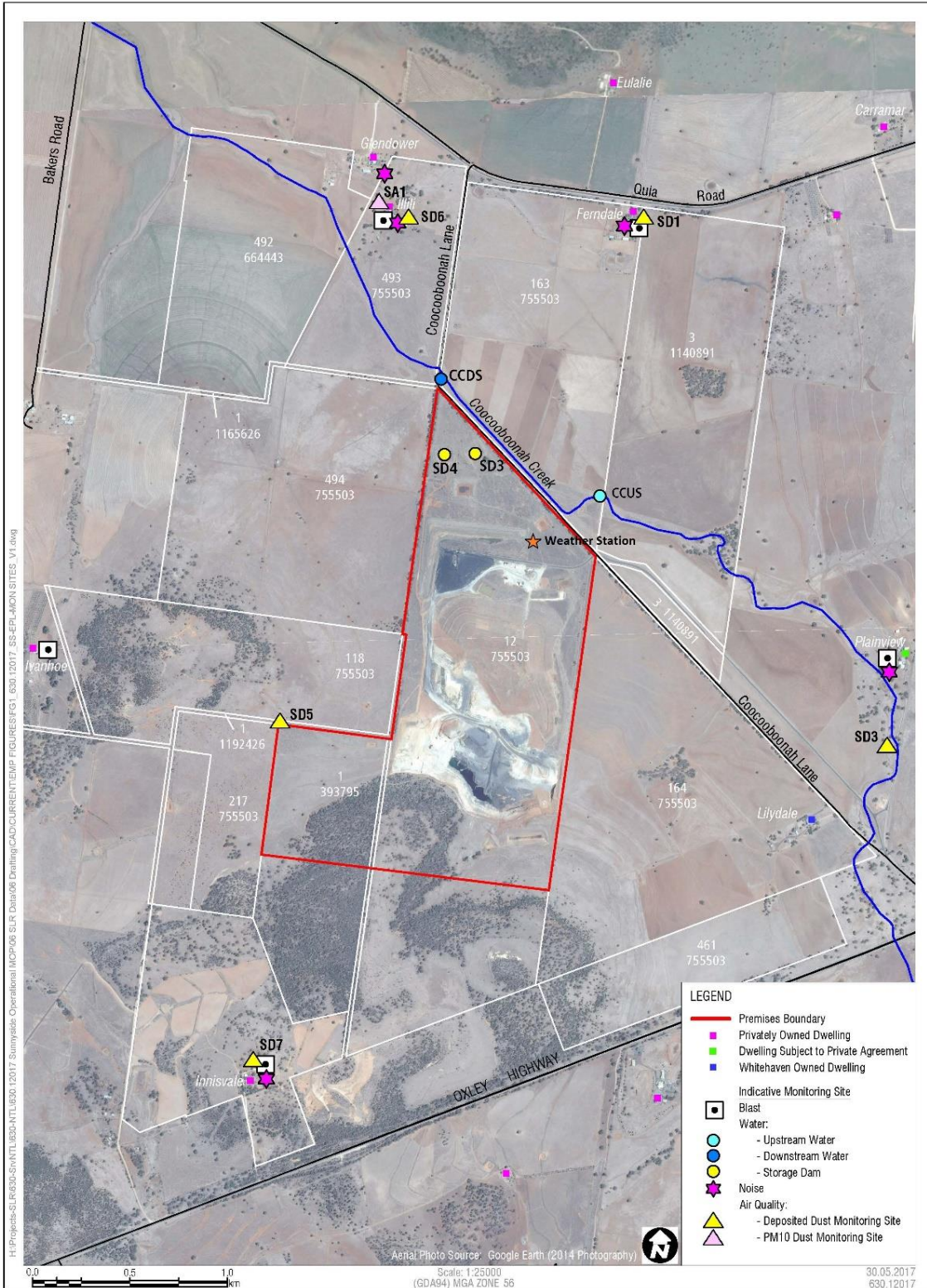
Table 2 - Pollutant Limits Apply

EPL ID	Pollutant	Units of Measure	Monitoring Frequency	No. of Samples for the Month	Date Sampled	Date Obtained	Min Value	Max Value	100%ile Limit	Exceedance (Yes/No)	Comments
9	TSS	mg/L	Special Frequency 1*	0	-	-	-	-	50	-	No discharge
	Oil & Grease	mg/L		0			-	-	10	-	No discharge
	pH	pH		0			-	-	6.5-8.5	-	No discharge
10	TSS	mg/L	Special Frequency 1*	0	-	-	-	-	50	-	No discharge
	Oil & Grease	mg/L		0			-	-	10	-	No discharge
	pH	pH		0			-	-	6.5-8.5	-	No discharge

* Special Frequency 1 means the collection of samples as soon as practicable after each discharge commences and in any case not more than 12 hours after each discharge commences.

** Special Frequency 2 means collection of samples quarterly (in the event of flow during the quarter) at a time when there is flow and as soon as practicable after each wet weather discharge from points 9 and 10 commences and in any case not more than 12 hours after each discharge commences.

Figure 1 – EPL 12957 Monitoring Locations



SUNNYSIDE COAL MINE – EPL
12957



EPL MONTHLY MONITORING REPORTS
2021 CORRECTION LOG

Month of EPL Report	Date of Original Publishing	Date of Correction	Date of Republishing	Correction/s made
December 2021	18/01/2022	2/09/2022	2/09/2022	<ul style="list-style-type: none">Removed duplicated November data for Table 1 EPL ID 11 and 12.